



The best beds in the world

UPHOLSTERED GUEST BED

This elegant upholstered guest bed provides the wonderful combination of style, comfort and practicality.

You can personalise the style and comfort of this guest bed to suit you, single, twin or large double.

Available in a choice of colours and choose to have two pocketed mattresses, or two open coil mattresses.

Matching headboard also available. 8 Year guarantee (frames and mattresses).



POCKET MATTRESS

- 620* Pocket springs
*in single size (90 x 190cm) mattress
- Deep soft layer
- Deep luxurious support layer
- Square pattern fluted mattress border
- Hand tufted with felt tufts
- Handles to aid turning
- Vents for ventilation
- 23kg
- Mattress border height 22cm

OPEN COIL MATTRESS

- 192* Open coil springs
*in single size (90 x 190cm) mattress
- Deep soft layer
- Cotton blend layer
- Deep luxurious support layer
- Resilient foam
- Square pattern fluted mattress border
- Hand tufted with felt tufts
- Handles to aid turning
- Vents for ventilation
- 16kg
- Mattress border height 21cm

FRAME DETAILS

	75 x 200cm	90 x 200cm
Height (excludes headboard)	41cm	41cm
Main frame length	200cm	200cm
Trundle frame length	190cm	190cm
Weight (main frame and trundle)	29kg	35kg
Headboard panel height to top of curve	60cm	60cm

COLOUR OPTIONS



Mist
0382



Dynamic
0372



Voltaic
0370



Mineral Grey
3114



Steel
3113



Zen Green
0383



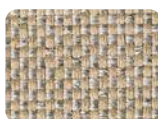
Azure
0384



Atomic
0373



Cedar
3111



Miami Sand
3112



Fusion
0371



Welsh Flint
0386



Spirit
0374



Cherry Blossom
0385