

ERGOZONE LUXURY COLLECTION



Relyon[®]

The best beds in the world

ERGOZONE LUXURY COLLECTION

Innovative and technology advanced handmade mattresses featuring five zone body support with two firmer support zones to follow the contours of your shoulders and hips with three softer support zones in between to provide perfect anatomical support and reduce pressure points for a more restful night's sleep. To provide choice in the comfort level as well as achieving the correct support each mattress in the collection feature different upholstery fillings; natural, memory foam and latex.

LATEX OPULENCE 2950

Innovative and technology advanced handmade mattress featuring five zone body support to provide perfect anatomical support and reduce pressure points for a more restful night's sleep. Upholstered with latex for further pressure relieving comfort.



2950

Pocketed springs
in a 150x200cm mattress

ONE TENSION

Spring tension



Five zone body
support



Pillowtop layer
featuring mini pocket springs



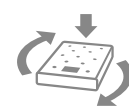
Deep soft layers



Latex



Cotton rebound
layer



No turn mattress,
rotation is recommended



3 Rows of side
stitching



Hand tufted with
wool tufts



In the bedroom shown:
150 x 200cm Latex Opulence 2950 mattress on a
firm edge pocketed divan.
Divan and matrix headboard shown in pacific 0275.

MEMORY RADIANCE 2550

Innovative and technology advanced handmade mattress featuring five zone body support to provide perfect anatomical support and reduce pressure points for a more restful night's sleep. Upholstered with memory foam for further pressure relieving comfort.



2550

Pocketed springs
in a 150x200cm mattress

ONE TENSION

Spring tension



Five zone
body support



Pillowtop layer
featuring mini pocket springs



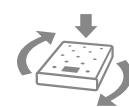
Deep soft layers



Memory foam



Cotton rebound
layer



No turn mattress,
rotation is recommended



3 Rows of side
stitching



Hand tufted with
wool tufts



In the bedroom shown:
150 x 200cm Memory Radiance 2550 mattress
on a firm edge pocketed divan.
Divan and traditional headboard shown in eclipse 0286.

NATURAL EMINENCE 2150

Innovative and technology advanced handmade mattress featuring five zone body support to provide perfect anatomical support and reduce pressure points for a more restful night's sleep. Upholstered with natural fillings for further comfort.



2150

Pocketed springs
in a 150x200cm mattress

ONE TENSION

Spring tension



Five zone body
support



Pillowtop layer
featuring mini pocket springs



Deep soft layers



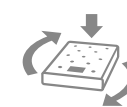
Lambswool layer



Cashmere and silk
layer



Cotton rebound
layer



No turn mattress,
rotation is recommended



3 Rows of side
stitching



Hand tufted with
wool tufts



In the bedroom shown:
150 x 200cm Natural Eminence 2150 mattress on a
firm edge pocketed divan.
Divan and modern headboard shown in silver birch 0285.



Relyon®

DESIGN YOUR PERFECT BED

The Ergozone Collection has been designed to make finding your perfect bed as easy as one two three.

1) Choose your mattress



The key to owning the perfect mattress is to take your time trying them. Consider your sleeping positions and the most comfortable size. Bear in mind that a larger bed will typically give you more space to enjoy an undisturbed night's sleep.

2) Choose your divan



Complement your mattress and refine the comfort by selecting the Ergozone divan that suits you best. Consider adding storage to your divan from a selection of drawer options or an ottoman base.

3) Choose your headboard and fabric



Your perfect mattress and divan can be tailored to suit your individual taste and home decor with a Ergozone Collection headboard. Choose from a vast array of stylish fabrics to complete your perfect bedroom.

THE PERFECT DIVAN

The marriage between mattress and divan is very important to your comfort. Selecting the right divan is as important as selecting the right mattress. Divans can be selected to fine tune your mattress, whether you wish it to be firmer or softer.

Firm edge pocketed divan



Pocketed springs sit inside a wooden sided frame. The pocketed springs soften the comfort of a mattress and the firm edges help prevent “roll off” on the side of the bed. Drawer options available.

- Standard height option 41.5cm
- Medium feel

Padded top ottoman



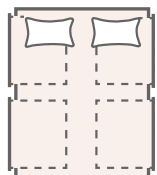
Ingenious storage solution option, more storage space than a drawer divan.

- Height 41.5cm
- Extra firm feel

TRADITIONAL TIMBER DRAWERS

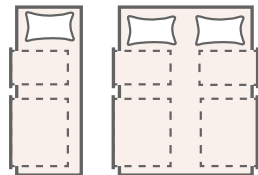
Storage is a precious commodity in most modern homes. Our superior quality drawer options are the perfect bedroom tidying solution. Available on our firm edge pocketed divan option. For durability, we have developed steel ball bearing runners that have a brilliantly smooth action.

4 Large drawer set



Double and above

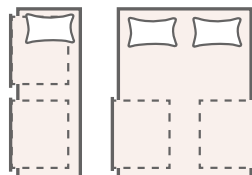
2+2 Drawer set (2 Large and 2 small drawers)



Single

Double and above

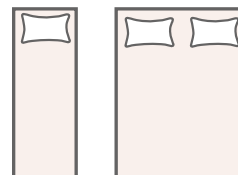
2 Drawer set (2 Large drawers)



Single

Double and above

Non storage



Single

Double and above

| Divan drawer specifications | Width | Length | Height for internal storage | Storage weight limit |
|-----------------------------|--------|--------|-----------------------------|----------------------|
| Large timber drawers | 77.5cm | 51cm | 15cm | 25kg |
| Small timber drawers | 37cm | 51cm | 15cm | 25kg |

OTTOMAN STORAGE DIVAN

The padded top ottoman divan is an ideal solution if space is limited in your bedroom as it provides generous storage space for linen, towels or clothes. The base lifts easily with the help of gas rams and hinges. A king size (150 x 200cm) ottoman divan has six times more space than a two drawer divan. Hand cut outs make it easier to open your ottoman and provide a cleaner look than handles.



| Height including castors | Height for internal storage | Maximum height with the lid open without mattress | Storage weight limit |
|--------------------------|-----------------------------|---|---|
| 41.5cm | 25cm | 141cm | 25kg per compartment distributed evenly across the compartment area |

HEADBOARDS

To personalise and complete your Relyon mattress and divan we have designed a range of nine headboards offering a blend of modern, traditional and contemporary styles. Available in a host of fabric options and heights, these beautifully hand-crafted headboards will form the centre piece of your dream bedroom.



Regal

• W+25cm on width of mattress/divan, D26cm, H163cm



Grand

• W - width of mattress/divan, D10cm, H135cm



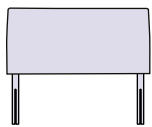
Matrix

• W - width of mattress/divan, D10cm, H135cm



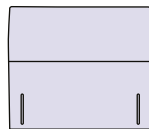
August

Shown above as the extra height option.



• Bedfix

W - width of mattress/divan,
D6cm, H70cm



• Extra height

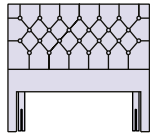
W - width of mattress/divan,
D6cm, H132cm





Harlequin

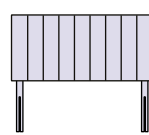
Only available in extra height.



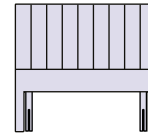
Extra height



Baronial



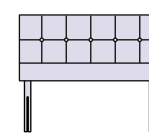
Bedfix



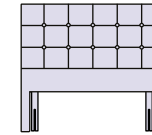
Extra height



Consort



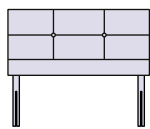
Bedfix
1 Row of buttons



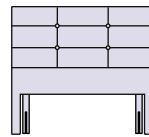
Extra height
2 Rows of buttons



Contemporary



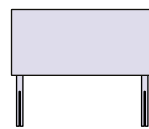
Bedfix
1 Row of buttons



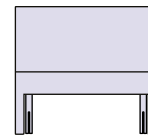
Extra height
2 Rows of buttons



Modern



Bedfix



Extra height

Harlequin, Baronial, Consort, Contemporary and August headboard specifications

| | 90cm | 120cm | 135cm | 150cm | 180cm |
|-----------------------------------|------|-------|-------|-------|-------|
| Bed fixing headboard | | | | | |
| Upholstered panel height:70cm | ✓ | ✓ | ✓ | ✓ | ✓ |
| Baronial depth:10cm | 11kg | 15kg | 17kg | 19kg | 21kg |
| All other headboard depths:7.62cm | | | | | |
| Extra height headboard | | | | | |
| Baronial depth:10cm | ✓ | ✓ | ✓ | ✓ | ✓ |
| All other headboard depths:7.62cm | 15kg | 20kg | 23kg | 25kg | 30kg |

FABRIC OPTIONS

From textured upholstery to luxurious velvets, all in a variety of colours, this wide selection of divan and headboard fabrics offer a stylish solution for any bedroom design. Whether you are looking for a classical divan set in a neutral colour or a coloured statement piece, the collection has a fabric to suit.

RANGE A FABRICS

Timeless



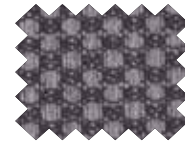
Champagne
3278



Coco
2136



Truffle
3280



Platinum
3297

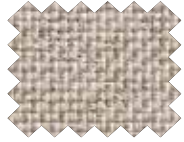


Noir
3282

Simplicity



Miami Sand
3112



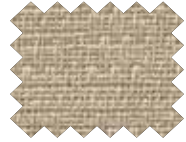
Steel
3113



Cedar
3111



Mineral Grey
3114



Linen
3602



Taupe
3603



The fabric colours in this brochure may vary slightly from the actual colours due to colour replication in the printing process.

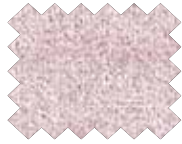
Shown here is a Deep Buttoned headboard in Duck Egg 3524.

RANGE B FABRICS

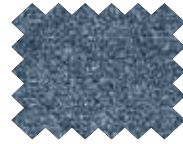
Velvet



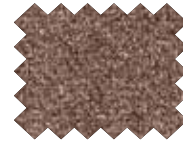
French Lace
0267



Spring Rose
0263

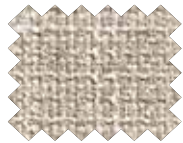


Midnight Blue
0237



Otter Brown
0239

Weave



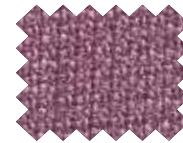
Ash
3495



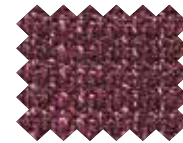
Quince
3517



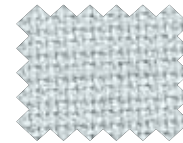
Camel
3523



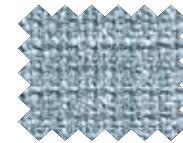
Lilac
3525



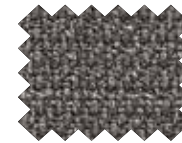
Plum
3514



Duck Egg
3524



Sky
3496



Granite
3504

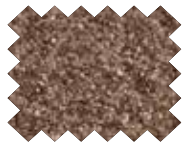


Charcoal
3526

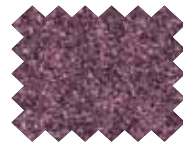
Fleece



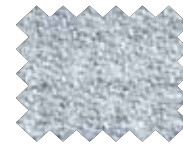
Sahara
0260



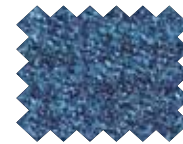
Hazelnut
0261



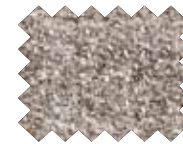
Periwinkle
0262



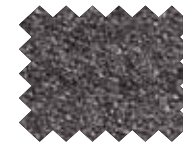
Rain
0259



Pacific
0275



Storm
0223

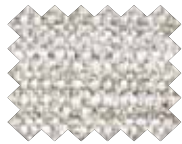


Atlantic
0258

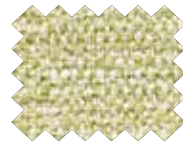
Empire



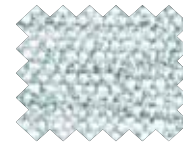
Oyster
0280



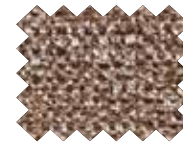
Silver Birch
0285



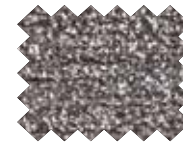
Guava
0282



Sea Salt
0283

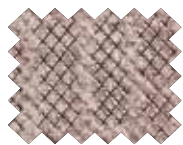


Earth
0287



Eclipse
0286

Sensation



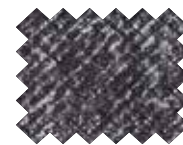
Fudge
0313



Seal
0312



Marlin
0314



Manhattan Black
0311

MATTRESS SPECIFICATION

| | | Latex opulence 2950 | Memory radiance 2550 | Natural eminence 2150 |
|---------------------|--|------------------------|-------------------------|--------------------------|
| Key features | Spring count in king size (150 x 200cm) mattress | 2950 | 2550 | 2150 |
| | Double layer of pocketed springs | ✓ | ✓ | ✓ |
| | Mattress border height (cm) | 30 | 30 | 32 |
| | Rows of side stitching | 3 | 3 | 3 |
| | Five zone body support | ✓ | ✓ | ✓ |
| | Pillowtop layer featuring mini pocket springs | ✓ | ✓ | ✓ |
| | No turn mattress | ✓ | ✓ | ✓ |
| Upholstery fillings | Deep soft layer | ✓ | ✓ | ✓ |
| | Cotton rebound layer | ✓ | ✓ | ✓ |
| | Latex | ✓ | | |
| | Memory foam | | ✓ | |
| | Lambswool layer | | | ✓ |
| | Cashmere and silk layer | | | ✓ |

* Including a 2cm maximum tolerance for non turn mattresses.

| | | Sizes available | | | |
|-----------------------|---------------|-----------------|-------------|-------------|-------------|
| | | 90 x 190cm | 135 x 190cm | 150 x 200cm | 180 x 200cm |
| Latex opulence 2950 | Spring count* | 1766 | 2468 | 2950 | 3502 |
| | Weight (kg)** | 27 | 40 | 47 | 57 |
| Memory radiance 2550 | Spring count* | 1366 | 2068 | 2550 | 3102 |
| | Weight (kg)** | 27 | 40 | 46 | 55 |
| Natural eminence 2150 | Spring count* | 966 | 1668 | 2150 | 2702 |
| | Weight (kg)** | 26 | 39 | 45 | 54 |

* Spring count base on full mattress size.

** Weights are rounded up to the next whole kg

www.relyon.co.uk

© Relyon Ltd. Station Mills, Wellington, Somerset, TA21 8NN

A member of Steinhoff UK Holdings Ltd. Registered in England and Wales No. 3738136
Steinhoff UK Holdings Ltd, Fifth Floor, Festival House, Jessop Avenue, Cheltenham, Gloucestershire, GL50 3SH

© Relyon Ltd. not to be copied without permission. All information correct at time of going to print.
Relyon reserves the right to alter specifications without prior notice.

e-edition June 2018