



**Relyon**<sup>®</sup>  
**CONTRACT**

**Boutique Contract Bed Collection**

**Our Contract Collection is a fabulous range of handmade pocket sprung beds which offer functionality and practicality whilst maintaining a quality that lasts.**

Our contract beds will provide support and comfort that will help turn your hotel and guest rooms into sanctuaries, providing a place for your guests to unwind rest and be refreshed.

All our contract beds are fully compliant with British contracts fire retardancy regulations BS 7177 medium hazard (up to Crib 5).

**Relyon were the first bed manufacturer to be awarded the demanding FIRA Gold certification for a contract bed collection.**

A sleep experience that will have your guests agreeing that **Relyon** really do make *the best beds in the world*.

## Contents

	Pages
Why Relyon	3
About Relyon	4-5
FIRA Gold	6-7
Overview of product tests	8-9
Creditations	10-11
Bed Collection	12-17
Contract Ortho	12-13
Contract Support	14-15
Contract Luxury	16-17
Zip and link option	18
Housekeeping	19
Fabric options	20
Divan options	21
Drawer options	22-23
Headboard Collection	24-25
Summary specification tables	26-27

© Relyon® Ltd. 2022 not to be copied without permission.

All information correct at time of going to print. Relyon reserves the right to alter specifications without prior notice.

The Images in this brochure are for illustrative purposes only, the fabrics on offer are listed on page 20.

The fabric colours in this brochure may vary slightly from the actual colours due to colour replication in the printing process.

1<sup>st</sup> Edition Contract Collection.  
Issue March 2022.

## Why choose Relyon contract beds:

Relyon is:

- One of the UK's leading bed manufacturers
- Master bed maker since 1858
- National Bed Federation Approved Member

Relyon has:

- Manufacturing Guild Mark status

Relyon Contract beds have:

- Source 5 and Crib 5 test certification
- 10 year bed guarantee
- Housekeeping turning labels for all mattresses
- Free delivery to mainland UK (Ts and Cs apply)
- No minimum order volume



Made in the UK



## Relyon master bed maker since 1858. A leading UK bed manufacturer.

Beginning life as a wool merchant and originally named by the founding Price family as Price Brothers and Co., the business evolved rapidly into manufacturing beds. Then in 1935 the name was changed to Relyon as the goal was to design beds that you could truly “rely on” for a good night’s sleep.

Relyon is one of the oldest bed manufacturers with vast experience of how to make the highest quality pocket-sprung hand-crafted beds. All of Relyon’s mattresses are handmade using time-honoured skills that have been passed on and improved upon generation after generation. Relyon’s craftsmen train for many years in order to perfect their skills in producing the best beds in the world. Relyon continually re-invest by training and purchasing the best machines to enable the craftsmen to manufacture products more efficiently and to the company’s exacting standards.

Over the last 163 years Relyon has gone from strength to strength. The heart of the business and the manufacturing headquarters remain in Wellington, Somerset, with a workforce of nearly 400 employees. Today Relyon is a brand name synonymous with the very highest standards of product design and manufacturing quality and is now recognised as one of the leading UK bed manufacturers. Relyon boasts a nationwide delivery operation as well as some international stockists too.

Our philosophy is still the same today:

**comfort and service is our paramount priority.**

**You can rely on Relyon.**



**Relyon**

The best beds in the world

**Relyon**

The best beds in the world

[www.relyon.co.uk](http://www.relyon.co.uk)

## Relyon Beds were the first UK Bed Manufacturer to be awarded Fira Gold Certification for our Boutique Contract Bed Collection.

Fira Gold is the most demanding product testing regime for contract beds and is the ultimate mark of excellence within the furniture industry.

Today, we continue to manufacture our Boutique Contract Bed Collection to exactly the same professional standards which are aimed at providing our customers with the knowledge and reassurance that these beds are still made to the highest standards in terms of comfort, quality and reliability.

The FIRA Gold Product Certification for mattresses and beds for use in non-domestic settings includes tests for **structural performance, strength, safety and stability, mattress performance, the performance of textiles and other materials, flammability performance** and finally an **ergonomic assessment**. The certification also looks at the **overall workmanship** and the quality of assembly instructions and installation procedures.



## 10 year guarantee of satisfaction

**Relyon**<sup>®</sup>

The best beds in the world



# As of today, we are the only bed manufacturer to have been awarded FIRA Gold certification for our contract bed collection.

The Certification process shows that Relyon Contract products meet all British standards and legislative standards. That they are fit for purpose and have good durability. Moreover, that Relyon has good customer service policies.

FIRA test method for contract beds are based on BS EN 1725: 1998 domestic furniture - beds and mattresses and BS 7397; 1991 mattresses, bed bases and bed sets.

## All Relyon Contract products have passed the structural, fabric performance, flammability mattress performance and ergonomics tests below

### Structure tests

BS EN 1725: 1998:

- **Stability**  
600N is applied vertically, 20N force applied horizontally outwards.
- **Durability**  
1500N load is applied for 10,000 cycles.
- **Vertical impacts**  
A load of 25kg is dropped from a height of 180mm, 10 times.
- **Durability of bed edge**  
1500N is applied for 5,000 cycles, one edge at the middle of the length, 200mm from the edge of the top surface of the mattress.
- **Vertical static load test**  
1400N is applied 10 times at any point where failure is likely to occur, load is maintained for 10 seconds.
- **Vertical static load test of the edge of the bed**  
1200N applied for 1 minute.

BS 7397: 1991:

- **Horizontal static load test**  
560N load is applied 10 times, centrally to the end and long side of the bed 100mm perpendicular below the top surface of the bed base.
- **Horizontal fatigue load test**  
Horizontal force of 400N in alternating directions for 50,000 cycles.
- **Diagonal base load test**  
In diagonally opposite corners, apply 375N simultaneously – 10 times in an inward direction.
- **Horizontal impact test**  
Strike 10 times from an angle of 38°.
- **Drop test**  
Drop the bed base (without mattress) so that the feet or castors strike the floor, 10 times from a height of 300mm.



## Fabric performance tests BS EN 14976: 2005

All Relyon Contract fabrics are suitable in respect of colour fastness to light, colour fastness to rubbing, colour fastness to acid and alkaline perspiration, tensile strength, seam slippage and tear strength for use.

## Flammability tests BS 7177 Medium hazard

All Relyon Contract divan sets comply with the Government legislation and Fire Department requirements. U.K Fire regulations and safety standards are amongst the highest in the world. This award provides a solid reassurance that Relyon contract divans have received the British Standard BS 7177 (Ignition Source 5) certificate which involves passing a very severe fire testing procedure, with each mattress being tested for cigarette, match flame and crib 5 before certifications are granted.

- **Cigarette test**

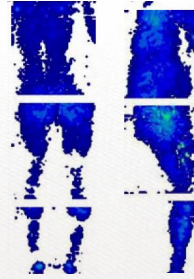
A lit cigarette is applied to the various different areas of the mattress (flat surface, ticking, taped edge, buttoning), the mattress and cigarette then have 1 hour to cease smouldering.

- **Match flame test**

A gas flame that is equivalent to a match flame is applied for 15 seconds to the various different areas of the mattress (as above), the mattress has 2 minutes to cease flaming after removal of the flame and has an hour to cease smouldering.

- **Crib 5 test**

A wooden crib is placed on the top surface of the mattress and it is lit using propanol. This has 10 minutes to cease flaming and then an hour to cease smouldering. The test is repeated on the overhang of the mattress.



Above: Shows the pressure map from a male lying in two different positions (on his back and on his side) on the Contract Luxury.

Pressure mapping shows a colourful, intuitive image of a person's pressure distribution and their peak pressure points. The highest levels of points of pressure would be indicated in the colour red, then graduating to orange, then yellow, then green with the colour blue being at the lowest end of the scale.



Notice how the pressure mapping of a male on the Contract Luxury appear only as blue which acts as visual evidence that the Contract Luxury does indeed provide high levels of comfort and support to reduce pressure on the body's contours.

## Ergonomic Assessments

Hips and shoulders can be the cause of 'pressure hot spots'. Relyon Contract mattresses are designed to work with the body's contours to reduce pressure on these hot spots and therefore encourage deeper and more therapeutic sleep.

- **Pressure mapping**

Pressure mapping was used to analyse the pressure of the body lying in two different positions. Each position was held for five minutes and pressure readings were taken during the end of the five minutes to get a realistic view of pressure when sleeping. A range of three males and three females were used to test each Contract mattress.

- **How easy the mattress is to get on and off**

Each Relyon Contract mattress was placed on a base of 400mm and then measured without and then with a 64kg weight dummy applied to represent a person sitting at the edge of each mattress. Every Relyon Contract mattress successfully passed the dimensions considered acceptable for people to get on and off the products.

FIRA Gold ergonomic assessments proved that all Relyon Contract mattresses are fit for purpose and convey an even amount of pressure on the body and are dimensionally suitable for most of the UK population. Therefore, it is considered that the range of mattresses, manufactured by Relyon still fulfil the ergonomic requirements for FIRA Gold.

# Furniture Makers Manufacturing Guild Mark, NBF Member and FSC®

Relyon are NBF Approved Members which means you can buy Relyon products in confidence, safe in the knowledge that what you buy is safe, clean and honest. To achieve NBF Approved Member status Relyon are independently audited against the NBF's strict Code of Practice criteria which cover three areas: flammability, health and hygiene, and trade descriptions.

Relyon hold ISO 9001 certification and Relyon manufactures each bed to the requirements of the Furniture Industry Research Association (FIRA) Gold Award Product for non-domestic beds.

Relyon has its own spring manufacturing company on site, as well as its own wood mill. In addition to these Relyon is the one amongst a few bed manufacturers to have its own in-house laboratory, which systematically tests all raw materials to ensure that these are in accordance with product specifications and achieve European legalisation standards.

The company's environmental management system meets the requirements of the highly regarded environmental Furniture Industry Sustainability Programme. Relyon supports and is committed to the environmentally appropriate, socially beneficial and economically viable management of the world's forests. This is achieved by its compliance to the requirements of the Forest Stewardship Council®, FSC®.

Through product testing, quality control and correct material processing the product offered by Relyon has an allocated 10 year guarantee from date of purchase.



# We were the first and only bed manufacturer to achieve FIRA Gold Production certification and each bed is still manufactured to the same exacting standards today.

Crafting with care...

Relyon has a record of meeting environmental standards, and we aim to maintain this reputation by continuing to invest in systems, practices and facilities to elevate standards in line with society's environmental expectations.

Relyon's environmental responsibilities are at the heart of our business and every effort is made to ensure that our manufacturing facilities, products and packaging are as environmentally friendly as possible and comply with all municipal, regional and national requirements. Relyon minimise the impact of their products on the environment by:

- Sourcing wood from FSC® certified sources
- Recycling our waste wherever possible
- Keeping packaging to minimum, and using responsibly sourced or recycled packaging
- Monitoring and targeting of energy and water consumption
- Ensuring all our purchased energy is 100% green energy
- Continual investment in systems, practices, people and facilities to continually reduce our impact on our environment

Consumers want sustainable products, and furniture is no exception. FSC®-certified wood is a trusted solution, showing your brands commitment to deliver better outcomes for forests, people, and businesses - today and for future generations.

Relyon, being FSC® certified shows that we comply with the highest standards on the market. By sourcing FSC®-certified materials and adding the FSC® label to our products, we can assure our consumers to make a responsible choice and that we are doing our best for the globe.



The mark of  
responsible forestry  
FSC® C165622


# Contract Ortho

The Contract Ortho provides superb levels of comfort and support with the convenience of being non turn and easy care as it only needs to be rotated. Featuring our firm perimeter support system that allows the sleeper to sleep up to the edge of the mattress with no roll off.

Mattress border height is 28cm\* for all sizes

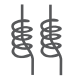
\*approximate, includes 2cm maximum tolerance for loft of fillings in new condition prior to use



  
**1050**  
**Pocketed Springs**  
 1050 in a 150x200cm  
 mattress

  
**Spring Tension**  
 One tension

  
**No Turn  
 Mattress**

  
**Firm Perimeter  
 Support**

  
**Hypo-allergenic  
 Layer**

  
**Wool Layer**

  
**Cotton  
 Blended Layer**

  
**Double Density  
 Support Layer**  
 Posture alignment layer

  
**3 Rows of Side  
 Stitching**

  
**Traditionally  
 Hand Tufted  
 with Wool Tufts**

  
**Luxurious and  
 Breathable 38%  
 Cotton Cover**

  
**Handles and  
 Vents**

  
**10 Year  
 Guarantee**

  
**Source 5  
 Approved**

	Spring Count	Weight*
<b>Single</b> 90 x 190cm	620	22kg
<b>Double</b> 135 x 190cm	930	32kg
<b>King</b> 150 x 200cm	<b>1050</b>	37kg
<b>Super king</b> 180 x 200cm	1287	45kg
<b>Zip and link</b> 2 x (90 x 200cm)	1320	47kg

\*Weights are based on a standard tension mattress and rounded to the next greatest whole kg.

**Special sizes available on request**




## Contract Support

The Contract Support provides the firmest sleeping experience in the Contract range. Pocketed springs, cotton blend and lambswool layers deliver a magnificent overall body support. Our firm perimeter support system extends the sleeping area to the very edge of the mattress with no roll off.

Mattress border height is 29cm\* for all sizes

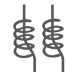
\*approximate, includes 2cm maximum tolerance for loft of fillings in new condition prior to use



  
**1500**  
**Pocketed Springs**  
 1500 in a 150x200cm  
 mattress

  
**Spring Tension**  
 One tension

  
**No Turn  
 Mattress**

  
**Firm Perimeter  
 Support**

  
**Hypo-allergenic  
 Layer**

  
**Wool Layer**

  
**Cotton  
 Blended Layer**

  
**Double Density  
 Support Layer**  
 Posture alignment layer

  
**3 Rows of Side  
 Stitching**

  
**Traditionally  
 Hand Tufted  
 with Wool Tufts**

  
**Luxurious and  
 Breathable 38%  
 Cotton Cover**

  
**Handles and  
 Vents**

  
**10 Year  
 Guarantee**

  
**Source 5  
 Approved**

	Spring Count	Weight*
<b>Single</b> 90 x 190cm	832	23kg
<b>Double</b> 135 x 190cm	1320	34kg
<b>King</b> 150 x 200cm	<b>1500</b>	39kg
<b>Super king</b> 180 x 200cm	1836	45kg
<b>Zip and link</b> 2 x (90 x 200cm)	1768	47kg

\*Weights are based on a standard tension mattress and rounded to the next greatest whole kg.

Special sizes available on request



## Contract Luxury

A beautiful hand-crafted mattress featuring a double layer of pocketed springs and a carefully selected combination of natural hair, wool, cotton and anti-allergenic fibres. Finished with two rows of hand side stitching and hand tufted with woollen tufts. The Contract Luxury delivers deeply sumptuous comfort.

Mattress border height is 30cm\* for all sizes

\*approximate, includes 4cm maximum tolerance for loft of fillings in new condition prior to use



  
**2200**  
**Pocketed Springs**  
2200 in a 150x200cm mattress

  
**Spring Tension**  
Available in soft or medium tensions

  
**Turnable Mattress**

  
**Hypo-allergenic Layer**

  
**Cotton Blended Layer**

  
**Wool Layer**

  
**Wool and Cotton Blended Layer**

  
**Traditional Hair**

  
**2 Rows of Side Stitching**

  
**Traditionally Hand Tufted with Wool Tufts**

  
**Luxurious and Breathable 38% Cotton Cover**

  
**Handles and Vents**

  
**10 Year Guarantee**

  
**Source 5 Approved**

	Spring Count	Weight*
<b>Single</b> 90 x 190cm	1258	31kg
<b>Double</b> 135 x 190cm	1924	46kg
<b>King</b> 150 x 200cm	<b>2200</b>	54kg
<b>Super king</b> 180 x 200cm	2730	65kg
<b>Zip and link</b> 2 x (75 x 200cm)	2340	56kg
<b>Zip and link</b> 2 x (90 x 200cm)	2652	67kg

\*Weights are based on a medium tension mattress and rounded to the next greatest whole kg.

**Special sizes available on request**





## Zip & link sleep solutions

Relyon Contract zip and link beds allow you to provide flexibility and maximise room occupancy when two beds are required rather than one. Super king and king size beds can be split into two single beds. The bases are linked at both the ends with metal linking bars and the mattresses zipped together along their full length.

Splitting the zip and link beds into two single beds also makes access easier for housekeeping; cleaning, vacuuming or turning and rotating the mattress.

Zip and link beds also provide an ideal solution where you would like to offer different tensions. A “comfortable bed” is a personal preference. Some people prefer a softer bed whereas others favour a firmer feel.





## Housekeeping and care advice

### Mattress care

The Relyon Contract mattresses are upholstered with layers of comfortable fillings which tend to 'settle' naturally. This settlement will be more noticeable in areas under the most body weight. This is quite normal and should not cause concern. In order to extend the life of the mattress and provide your guests with the most comfortable sleep as possible the mattress labels have a 'housekeeping instructions' box in the top right hand corner which states the care instructions. These housekeeping instructions advise whether the mattress needs rotating and/or turning and the dates in the month that it is required.

**Housekeeping Instructions:**  
Turn this mattress regularly on  
1st and 15th of each month



**Rotate the  
Mattress**

**Contract Ortho** and  
**Contract Support** are easy  
care, no turn mattresses so  
only need rotating.

**Housekeeping Instructions:**  
Turn this mattress regularly on  
1st and 15th of each month



**Flip Over  
Completely** & **Rotate the  
Mattress**

**Contract Luxury** is a  
turnable mattress, both  
sides of the mattress can  
be used.  
Therefore it will need to be  
flipped over completely as  
well as rotated regularly.

### Divan and headboard care

The legs and castors on all Relyon Contract divans are secured into hardwood corner blocks for maximum strength. The standard padded top divan bases are fitted with stylish silver castors which provides the practical option for easy moving compared to the padded top on legs which we recommend to be lifted and not dragged. We recommend lifting headboards and padded top divan on legs to avoid unnecessary damage that dragging can cause.

On a carpeted floor legs and castors tend to become embedded and grip to the depression they create. We also recommend that legs and castors are periodically checked to make sure that remain fully secured in the corner blocks.

## Fabric options

### Mattress fabric:

Every Relyon Contract mattress is finished in a luxurious and breathable Belgian damask with interwoven Relyon Contract branding.

Reference 3614. Composition: 62% Viscose, 38% Cotton.

### Divan and headboard fabric choices:

The Relyon Contract range of 5 divan base and headboard fabric colours allows you to create the perfect haven for your guests. Longevity is assured thanks to the soft and durable mattress fabric.

100% Polyester



Soft Pink  
0437



Smoke  
0434



Pewter  
0436



Admiral  
0435



Sage  
0433



Mattress Fabric

### Quality assured

All Relyon Contract fabrics have passed British Standards fabric performance tests. BS EN 14976: 2005.

Relyon have tested all four contract fabrics and approved them suitable in respect of colour fastness to light, colour fastness to rubbing, colour fastness to acid and alkaline perspiration, tensile strength, seam slippage and tear strength for contract use.

## Divan options

Relyon offers two different divan options to couple with the Contract mattresses. All Contract divans are solid timber sided for additional strength and durability.



Padded top divan | featuring silver castors

Height = 41.5cm



Padded top divan on legs | featuring beech legs

Height = 35cm

Padded top divans provide a firmer feel.

### **Drawer options upgrades available with this base.**

All drawers are assembled from solid hardwood components, using dovetail joints for strength, and feature smooth operation ball bearing drawer runners

The padded top divan base on legs provides a firmer feel with a lower overall height. The solid beech cone legs lift the low profile box base up from the floor for a stylish look.

Leg height only = 19cm



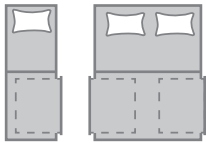


**Adding valuable storage space...**  
Drawer option upgrades available on  
padded top divans.

## Drawer options

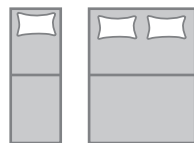
To allow you to add valuable storage to your room Relyon offers two different drawer options on the padded top divan. If you do not require a divan with drawers we also offer non storage options.

### 2 Large drawer set



Single Double and above

### Non storage



Single Double and above

Drawers for 90 x 190cm divans are available in left or right hand opening to suit the layout of your room. Please inform your retailer which you would like when ordering.

Divan drawer specifications	Width	Length	Height for internal storage	Storage weight limit
Large timber drawers with dovetail joints	78.3cm	52.5cm	15cm	25kg

All drawers are assembled from solid hardwood components, using dovetail joints for strength, and feature smooth operation ball bearing drawer runners.

If you select a divan with drawers please consider if your room has enough space to be able to open them: divans with drawers will need at least 40cm surrounding space from the side of the bed to enable you to pull the drawers out.



## Headboards

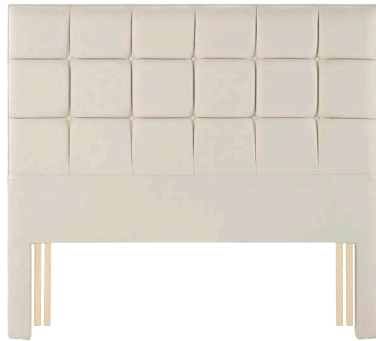
A headboard is the all-important finishing touch that adds flair and interest to your guest rooms. All Relyon Contract headboard designs are available in full height. There are two designs to choose from for a smart and stylish overall look.

Contract headboards are upholstered with fire retardant fabrics to meet the regulations for commercial use.

Design	Height	Width	Depth
Consort Full Height Headboard	135cm	Same width of mattress/divan	7.62cm
Modern Headboard	135cm	Same width of mattress/divan	7.62cm







Deep buttoned 150cm slim headboard

## Consort

Height = 135cm

2 rows of buttons and a striking design finished in a square panel effect.



Modern 150cm slim headboard

## Modern

Height = 135cm

Simple and modern in an upholstered padded finish.

## Sizes available

Model		Height	Single	Double	King	Super king	Linked and zipped	
			90 x 190cm	135 x 190cm	150 x 200cm	180 x 200cm	90 x 190cm	90 x 200cm
Contract Ortho	Mattress	28cm*	✓	✓	✓	✓	✓	✓
	Padded top divan	69.5cm*	✓	✓	✓	✓	✓	✓
	Padded top 2 drawer divan	69.5cm*	✓	✓	✓	✓	✓	✓
	Padded top on legs divan	59cm*	✓	✓	✓	✓	✓	✓
Contract Support	Mattress	29cm*	✓	✓	✓	✓	✓	✓
	Padded top divan	70.5cm*	✓	✓	✓	✓	✓	✓
	Padded top 2 drawer divan	70.5cm*	✓	✓	✓	✓	✓	✓
	Padded top on legs divan	60cm*	✓	✓	✓	✓	✓	✓
Contract Luxury	Mattress	30 cm**	✓	✓	✓	✓	✓	✓
	Padded top divan	71.5cm**	✓	✓	✓	✓	✓	✓
	Padded top 2 drawer divan	71.5cm**	✓	✓	✓	✓	✓	✓
	Padded top on legs divan	61cm**	✓	✓	✓	✓	✓	✓

\* Including a 2cm maximum tolerance for loft of fillings for no turn mattresses.  
 \*\* Including a 4cm maximum tolerance for loft of fillings for turnable mattresses.

Special sizes available on request

# Model overviews

Special sizes available on request

		Contract Ortho	Contract Support	Contract Luxury
Spring counts	Single mattress (90x190cm)	620	832	1258
	Double mattress (135x200cm)	930	1320	1924
	<b>King size mattress (150x200cm)</b>	<b>1050</b>	<b>1500</b>	<b>2200</b>
	Super king mattress (180x200cm)	1287	1836	2730
	Zippered mattresses 2 x (75x200cm)	---	---	2340
	Zippered mattresses 2 x (90x200cm)	1320	1768	2652
Key features	Spring tension(s) available***	ONE	ONE	S,M
	Mattress border height (cm)	28*	29*	30**
	Rows of hand side stitching			2
	Rows of side stitching	3	3	
	Turnable			✓
	No turn	✓	✓	
	Firm perimeter support	✓	✓	
	Double layer of pocket springs			✓
	Single layer of pocket springs	✓	✓	
	Anti-allergenic layer	✓	✓	✓
Upholstery fillings	Double density layer	✓	✓	
	Rebound cotton layer	✓	✓	
	Lambswool layer	✓	✓	✓
	Cotton blend			✓
	Soft white fibre			✓
	Wool, cotton, hair layer			✓

\* Including a 2cm maximum tolerance for loft of fillings for no turn mattresses.

\*\*Including a 4cm maximum tolerance for loft of fillings for turnable mattresses

\*\*\* S = Soft tension. M = Medium tension. ONE = One tension.

## Mattress fabric:

Every mattress is finished in a luxurious and breathable Belgian damask 3614 with interwoven Relyon Contract branding. 62% Viscose, 38% Cotton.

## Divan and headboard fabrics:

Choice of five fabrics for divan and headboard upholstery. 100% Polyester.





**Relyon<sup>®</sup>**  
**CONTRACT**

[www.relyon.co.uk](http://www.relyon.co.uk)

© Relyon<sup>®</sup> Ltd. Station Mills, Wellington, Somerset, TA21 8NN



Made in the UK

